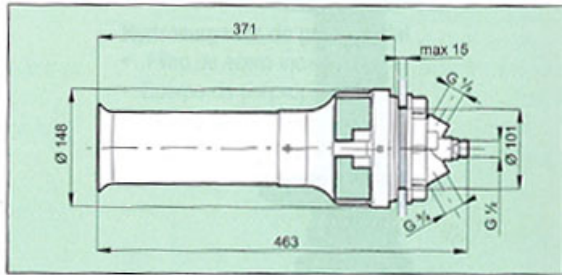


Agitators

Supermix Hydraulic Agitator

"SUPERMIX" hydraulic agitator



COD.
502 053



The SUPERMIX body contains three circuits:

- A Pressure
- B Return
- C Product injection, additional pump or air mixing

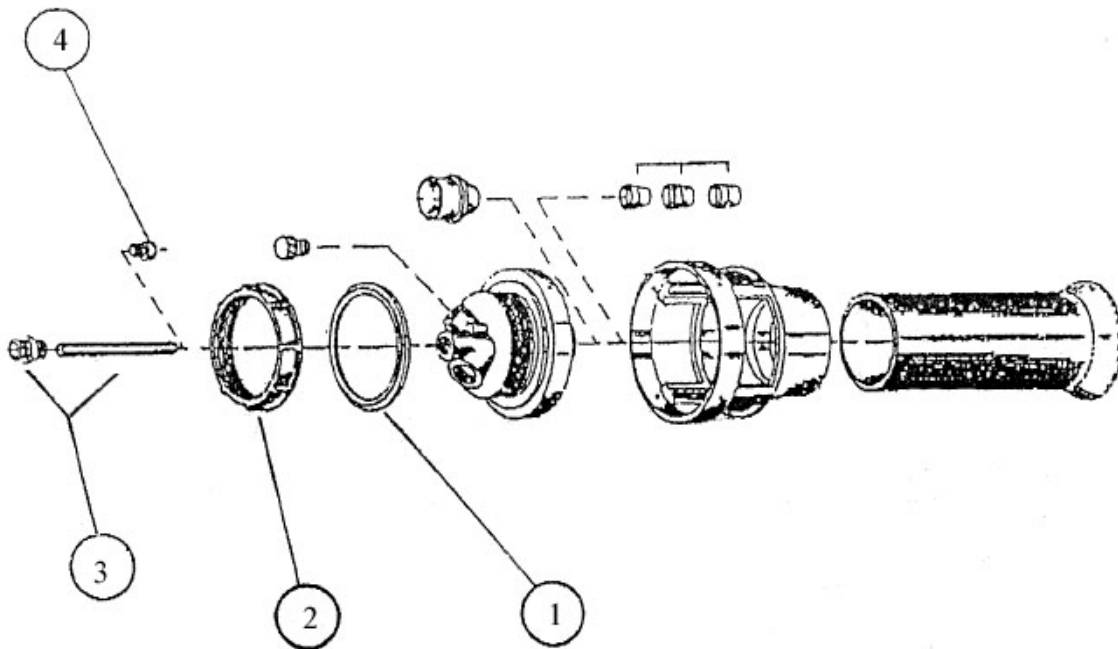
Circuit A: PRESSURE

By using the working pressure, the mixing power of SUPERMIX is greater than the performance of traditional systems, ensuring a flow rate of 300 to 1300 l/min. depending on the pump and nozzle used. Graph "A1" illustrates consumption, while graph "A2" shows the corresponding performance values using nozzles with diameter 1.5 - 2 - 2.5 - 3 mm.

Circuit B: RETURN

This circuit utilises the pump return flow during limit, control and tank filling operations, when all the pump delivery fluid passes through the circuit. Recommended for low-pressure treatments, average and low volumes, pneumatic systems and spraying.

Graph "B1" illustrates the residual pressure in the circuit at various flow rates, while graph "B2" shows the corresponding performance values without a nozzle and using nozzles with diameter 13 - 15 - 17 mm.



Position	Code	Description
1	A502053.050	Body Gasket
2	A502053.040	Nut
3	A502053.070	Injector Pipe and 1/2" Nipple
4	A502053.080	1.5mm Nozzle
4	A502053.082	2.0mm Nozzle
4	A502053.083	2.5mm Nozzle

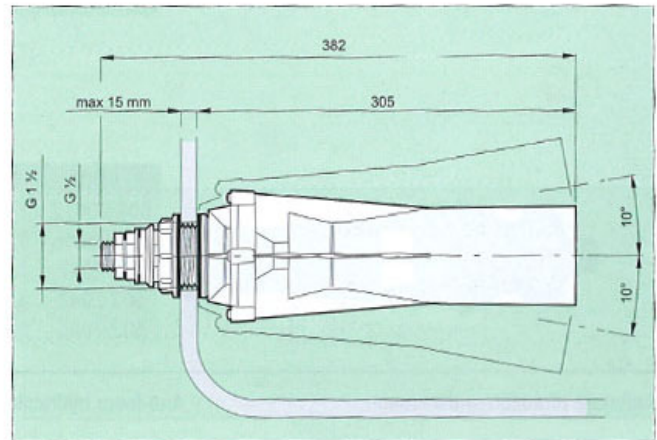
Checkable Hydraulic Agitators (Swivel and Non Swivel Variants)

- Can be adapted to various tank shapes
- Double venture circuit to increase efficiency and reduce water consumption
- Threaded G 1/2" connector for simple installation on tank
- Suitable for low pressure (nozzles 5–9 mm) or high pressure (nozzles 2–3 mm) operation
- Polypropylene body

Checkable swivel hydraulic agitator



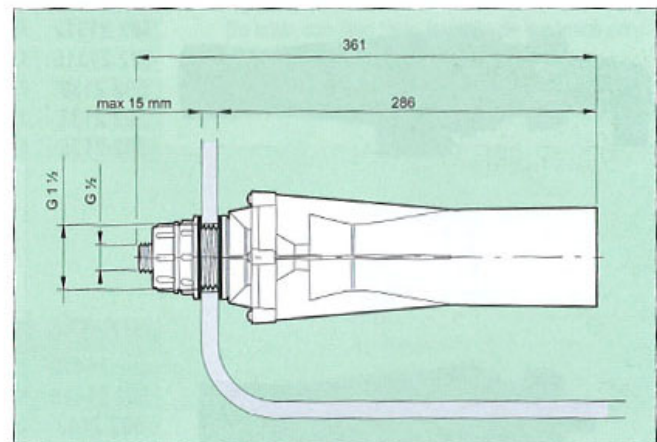
COD.	Ugello / Nozzle
502 062	2 mm CERAMIC
502 063	3 mm INOX / S.S.

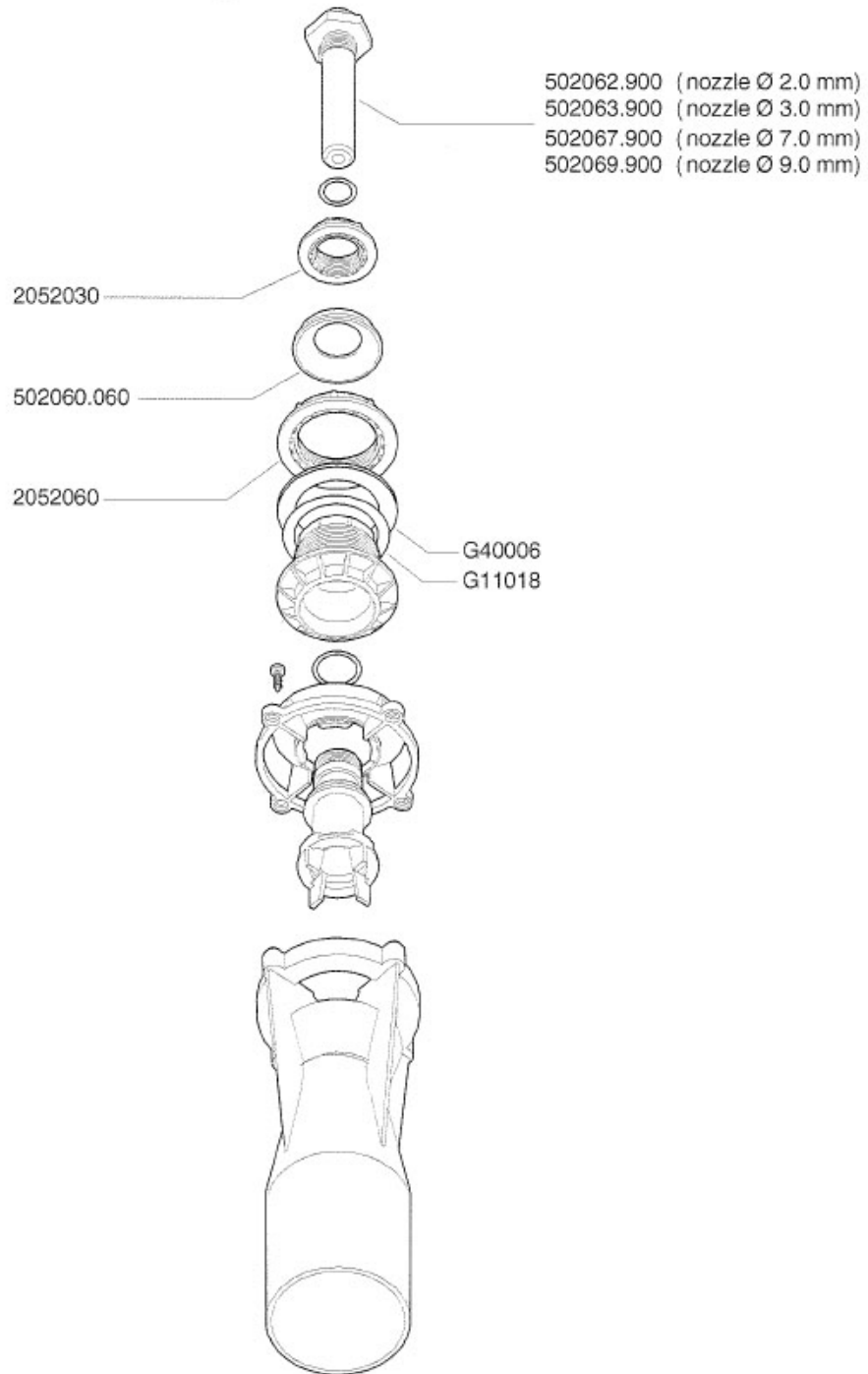
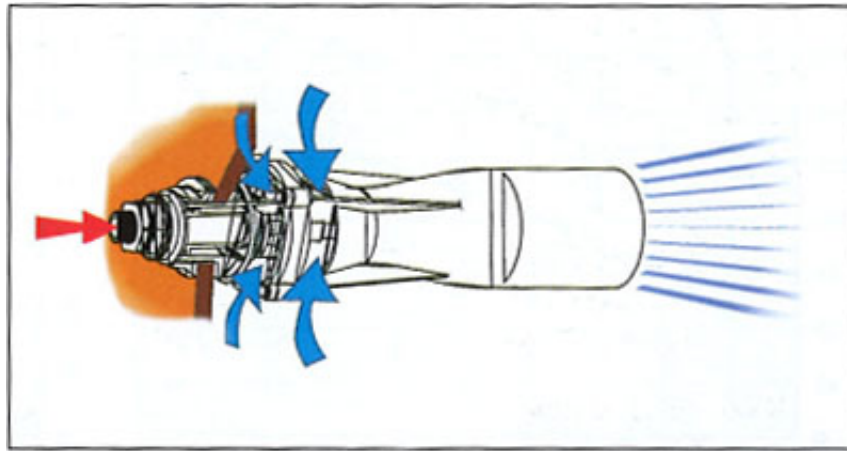


Checkable hydraulic agitator



COD.	Ugello / Nozzle
502 163	3 mm INOX / S.S.



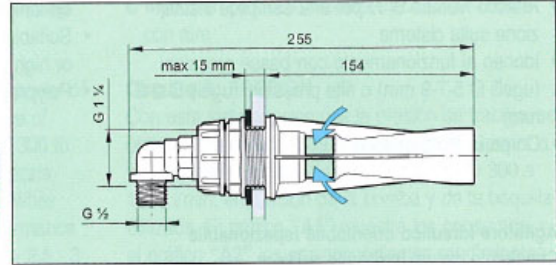


Hydraulic Agitator with Inspection Hole

Hydraulic agitator with inspection hole



COD.	Ugello / Nozzle
502 20312	1.2 mm CERAMIC
502 2033	3.0 mm- INOX / S.S.



COD.	Ugello / Nozzle
502 20412	1.2 mm CERAMIC
502 2042	2.0 mm CERAMIC

